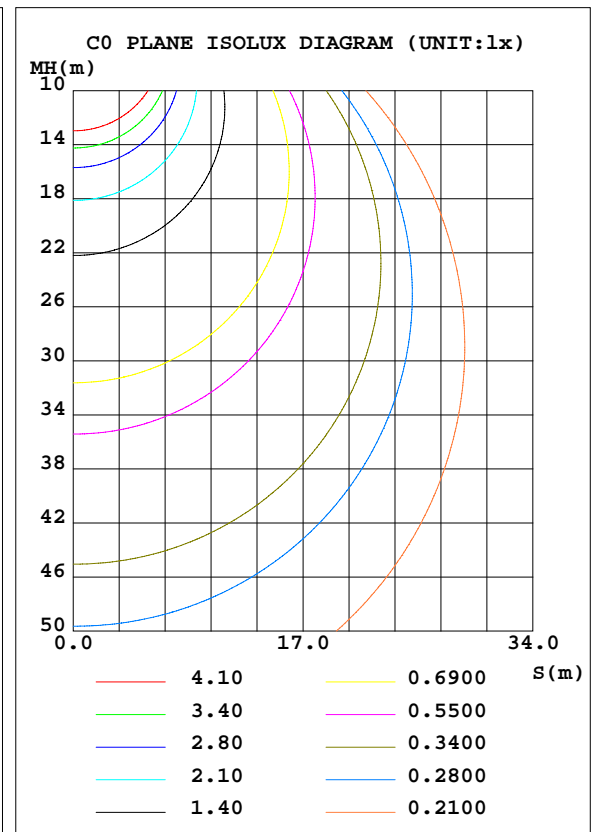
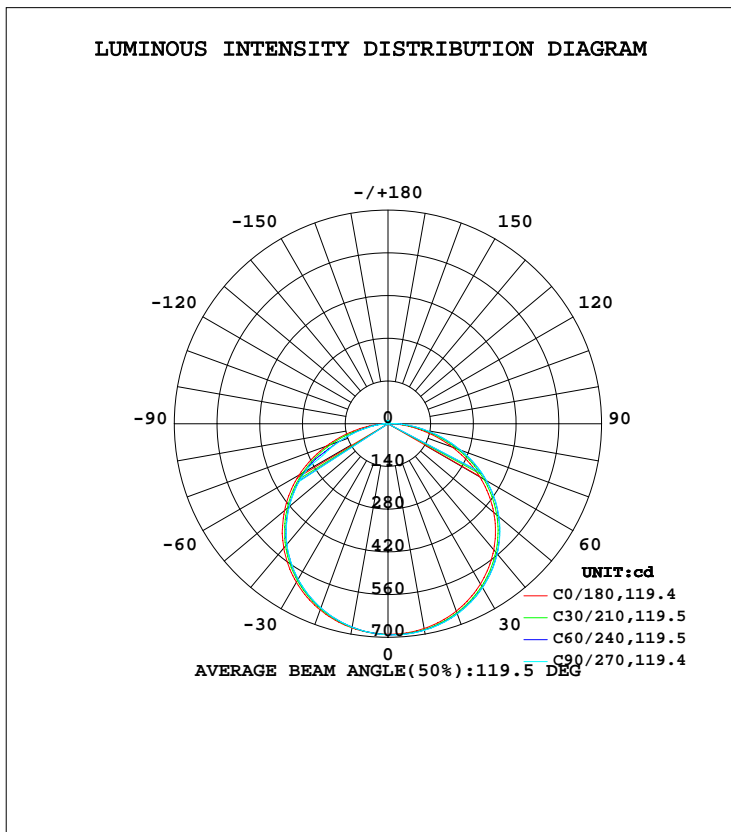


LUMINAIRE PHOTOMETRIC TEST REPORT

NAME:	TYPE:FH19W-P0-G1 28HZ940 24V1603HML0L01
SPEC.:LWF-132400W160-HE	DIM.: 1 SERIAL No.:
MFR.: LEDWIDE LIGHTING CO., LTD	SUR.:0.01*1 Shielding Angle:

DATA OF LAMP		PHOTOMETRIC DATA Eff: 121.57 lm/W			
MODEL		Imax(cd)	692.4	S/MH(C0/180)	1.29
NOMINAL POWER(W)	17.8778	LOR(%)	100.0	S/MH(C90/270)	1.27
RATED VOLTAGE(V)	24	TOTAL FLUX(lm)	2173.4	$\eta$ UP, DN(C0-180)	1.0,51.6
NOMINAL FLUX(lm)	2173.44	CIE CLASS	DIRECT	$\eta$ UP, DN(C180-360)	0.8,46.6
LAMPS INSIDE	1	$\eta$ up(%)	1.8	CIBSE SHR NOM	1.50
TEST VOLTAGE(V)	24	$\eta$ down(%)	98.2	CIBSE SHR MAX	1.50



C Range: 0 - 360DEG  
 C Interval: 15.0DEG  
 Test Speed: HIGH  
 Temperature:25.3DEG  
 Operators:  
 Test Date:2018-07-03

$\gamma$  Range: 0 - 180DEG  
 $\gamma$  Interval: 1.0DEG  
 Test System:EVERFINE GO-2000A\_V1 SYSTEM V2.0.362  
 Humidity:65.0%  
 Test Distance:12.586m [K=1.0000]  
 Remarks:

ZONAL FLUX DIAGRAM

ZONAL FLUX DIAGRAM:

γ	C0	C45	C90	C135	C180	C225	C270	C315	γ	Φ zone	Φ total	%lum, lamp
10	681.4	686.1	687.3	684.3	679.3	676.8	676.8	678.5	0- 10	65.50	65.50	3.01,3.01
20	653.6	662.0	663.4	658.3	649.5	643.3	642.4	646.6	10- 20	189.1	254.6	11.7,11.7
30	606.2	618.1	620.1	612.7	600.1	590.3	588.5	595.1	20- 30	290.8	545.4	25.1,25.1
40	539.2	554.6	557.0	547.8	531.4	518.0	515.4	524.3	30- 40	358.2	903.6	41.6,41.6
50	452.4	470.5	474.4	462.3	442.5	426.4	422.1	433.7	40- 50	381.3	1285	59.1,59.1
60	346.7	368.4	372.9	359.3	336.4	317.0	311.8	324.7	50- 60	354.9	1640	75.4,75.4
70	224.5	249.6	254.5	240.3	215.5	180.2	168.9	185.3	60- 70	276.6	1916	88.2,88.2
80	101.1	124.1	128.6	116.7	93.36	65.87	61.34	65.87	70- 80	162.2	2079	95.6,95.6
90	12.68	27.83	29.63	24.14	6.662	8.953	5.896	10.39	80- 90	54.98	2134	98.2,98.2
100	2.971	3.056	3.572	2.548	2.466	2.971	2.745	3.557	90-100	6.299	2140	98.5,98.5
110	4.696	4.519	4.178	4.577	3.895	3.983	4.026	3.868	100-110	3.651	2144	98.6,98.6
120	6.224	6.424	6.535	6.219	5.266	5.256	5.299	5.150	110-120	4.989	2149	98.9,98.9
130	7.408	7.451	8.491	7.180	6.482	6.422	6.425	6.332	120-130	5.777	2154	99.1,99.1
140	7.877	8.182	9.633	8.099	7.731	7.925	7.484	7.424	130-140	5.833	2160	99.4,99.4
150	8.156	8.945	9.652	8.748	8.922	8.920	8.585	8.583	140-150	5.296	2165	99.6,99.6
160	8.682	9.488	9.675	9.290	9.882	9.651	10.03	9.815	150-160	4.243	2170	99.8,99.8
170	9.330	9.899	10.09	9.488	10.50	10.39	11.07	10.48	160-170	2.770	2172	100,100
180	10.52	10.74	11.44	10.75	10.55	10.67	11.43	10.68	170-180	0.9888	2173	100,100
DEG	LUMINOUS INTENSITY:cd									UNIT:lm		

Conical surface Flux(90deg): 1094.4 lm

%lum = 50.4%  
%lamp = 50.4%

Conical surface Flux(120deg): 1639.8 lm

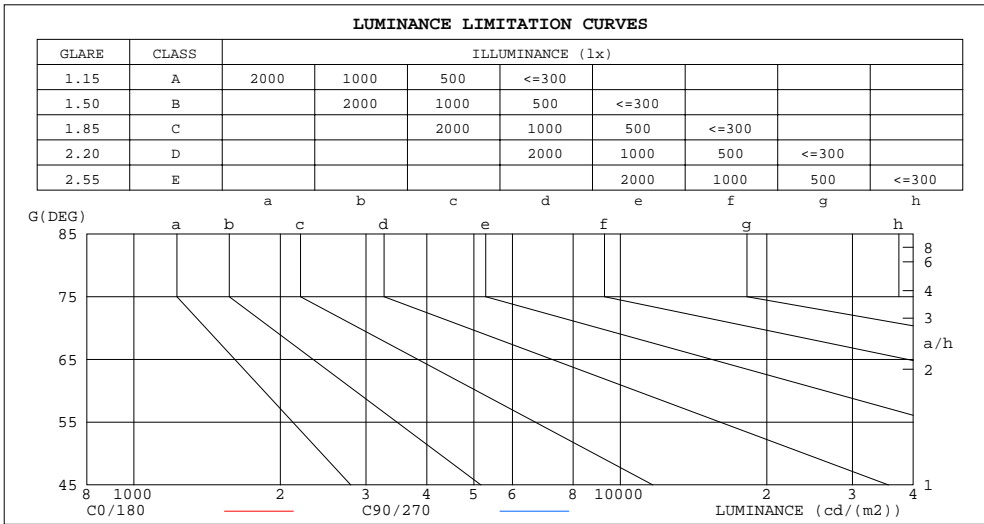
%lum = 75.4%  
%lamp = 75.4%

C Range: 0 - 360DEG  
C Interval: 15.0DEG  
Test Speed: HIGH  
Temperature:25.3DEG  
Operators:  
Test Date:2018-07-03

γ Range: 0 - 180DEG  
γ Interval: 1.0DEG  
Test System:EVERFINE GO-2000A\_V1 SYSTEM V2.0.362  
Humidity:65.0%  
Test Distance:12.586m [K=1.0000]  
Remarks:

LUMINANCE LIMITATION CURVES

NAME:	TYPE:FH19W-P0-G1 28HZ940 24V1603HML01
SPEC.:LWF-132400W160-HE	DIM.: 1 SERIAL No.:
MFR.: LEDWIDE LIGHTING CO., LTD	SUR.:0.01*1 Shielding Angle:



LUMINANCE cd/(m2)		
G(DEG)	C0/180	C90/270
85	56261	82319
80	58200	74069
75	62320	73860
70	65629	74409
65	68002	74713
60	69339	74581
55	70039	74264
50	70374	73808
45	70468	73286

C Range: 0 - 360DEG  
 C Interval: 15.0DEG  
 Test Speed: HIGH  
 Temperature:25.3DEG  
 Operators:  
 Test Date:2018-07-03

γ Range: 0 - 180DEG  
 γ Interval: 1.0DEG  
 Test System:EVERFINE GO-2000A\_V1 SYSTEM V2.0.362  
 Humidity:65.0%  
 Test Distance:12.586m [K=1.0000]  
 Remarks:

WEC AND CCEC

NAME:	TYPE:FH19W-P0-G1 28HZ940 24V1603HML0L01
SPEC.:LWF-132400W160-HE	DIM.: 1 SERIAL No.:
MFR.: LEDWIDE LIGHTING CO., LTD	SUR.:0.01*1 Shielding Angle:

ρcc	80%			70%			50%			30%			10%			0
ρw	50%	30%	10%	50%	30%	10%	50%	30%	10%	50%	30%	10%	50%	30%	10%	0
ρfc	20%			20%			20%			20%			20%			0
RCR	RCR:Room Cavity Ratio						Wall Exitance Coefficients(WEC)									
0.0																
1.0	.322	.183	.058	.314	.179	.057	.300	.172	.055	.287	.165	.053	.274	.159	.051	
2.0	.300	.164	.050	.293	.161	.050	.280	.156	.048	.269	.151	.047	.258	.146	.046	
3.0	.276	.147	.044	.270	.145	.044	.259	.140	.043	.248	.136	.042	.239	.132	.041	
4.0	.254	.132	.039	.249	.130	.038	.238	.126	.038	.229	.123	.037	.220	.120	.036	
5.0	.234	.119	.035	.229	.118	.034	.220	.115	.034	.212	.112	.033	.204	.109	.033	
6.0	.217	.109	.031	.212	.107	.031	.204	.105	.030	.197	.102	.030	.190	.100	.030	
7.0	.201	.100	.028	.198	.098	.028	.190	.096	.028	.184	.094	.027	.177	.092	.027	
8.0	.188	.092	.026	.184	.091	.026	.178	.089	.025	.172	.087	.025	.166	.085	.025	
9.0	.176	.085	.024	.173	.084	.024	.167	.082	.023	.161	.081	.023	.156	.079	.023	
10.0	.165	.079	.022	.162	.078	.022	.157	.077	.022	.152	.075	.021	.147	.074	.021	

ρcc	80%			70%			50%			30%			10%			0
ρw	50%	30%	10%	50%	30%	10%	50%	30%	10%	50%	30%	10%	50%	30%	10%	0
ρfc	20%			20%			20%			20%			20%			0
RCR	RCR:Room Cavity Ratio						Ceiling Cavity Exitance Coefficients(CCEC)									
0.0	.204	.204	.204	.175	.175	.175	.119	.119	.119	.069	.069	.069	.022	.022	.022	
1.0	.195	.170	.147	.167	.146	.127	.114	.100	.088	.066	.058	.051	.021	.019	.017	
2.0	.187	.146	.111	.161	.126	.096	.110	.087	.067	.063	.051	.039	.020	.016	.013	
3.0	.180	.129	.088	.154	.111	.076	.106	.077	.053	.061	.045	.031	.020	.015	.010	
4.0	.172	.115	.072	.148	.100	.062	.102	.069	.044	.059	.041	.026	.019	.013	.009	
5.0	.165	.105	.061	.142	.091	.053	.098	.064	.037	.057	.037	.022	.018	.012	.007	
6.0	.158	.097	.053	.136	.084	.046	.094	.059	.033	.054	.035	.019	.018	.011	.006	
7.0	.151	.090	.047	.130	.078	.041	.090	.055	.029	.052	.032	.017	.017	.011	.006	
8.0	.144	.084	.043	.124	.073	.037	.086	.051	.027	.050	.030	.016	.016	.010	.005	
9.0	.138	.079	.039	.119	.069	.034	.082	.048	.024	.048	.029	.015	.016	.009	.005	
10.0	.132	.075	.037	.114	.065	.032	.079	.046	.023	.046	.027	.014	.015	.009	.005	

C Range: 0 - 360DEG  
 C Interval: 15.0DEG  
 Test Speed: HIGH  
 Temperature:25.3DEG  
 Operators:  
 Test Date:2018-07-03

γ Range: 0 - 180DEG  
 γ Interval: 1.0DEG  
 Test System:EVERFINE GO-2000A\_V1 SYSTEM V2.0.362  
 Humidity:65.0%  
 Test Distance:12.586m [K=1.0000]  
 Remarks:

UGR(Unified Glare Rating) Table

NAME:		TYPE:FH19W-P0-G1 28HZ940 24V1603HML0L01								
SPEC.:LWF-132400W160-HE		DIM.: 1				SERIAL No.:				
MFR.: LEDWIDE LIGHTING CO., LTD		SUR.:0.01*1				Shielding Angle:				
ceiling/cavity	0.7	0.7	0.5	0.5	0.3	0.7	0.7	0.5	0.5	0.3
walls	0.5	0.3	0.5	0.3	0.3	0.5	0.3	0.5	0.3	0.3
working plane	0.2	0.2	0.2	0.2	0.2	0.2	0.2	0.2	0.2	0.2
Room dimensions	Viewed crosswise					Viewed endwise				
x = 2H y = 2H	25.1	26.7	25.4	26.9	27.1	25.4	26.9	25.7	27.2	27.4
3H	26.8	28.2	27.1	28.5	28.8	27.2	28.6	27.6	28.9	29.2
4H	27.5	28.8	27.8	29.1	29.4	28.0	29.4	28.4	29.6	29.9
6H	28.0	29.3	28.4	29.6	29.9	28.7	29.9	29.0	30.2	30.6
8H	28.2	29.4	28.5	29.7	30.0	28.9	30.1	29.3	30.5	30.8
12H	28.3	29.5	28.7	29.8	30.1	29.1	30.3	29.5	30.6	31.0
4H 2H	25.9	27.2	26.2	27.5	27.8	26.1	27.4	26.4	27.7	28.0
3H	27.7	28.9	28.1	29.2	29.6	28.1	29.3	28.5	29.6	29.9
4H	28.6	29.6	29.0	30.0	30.4	29.0	30.1	29.4	30.4	30.8
6H	29.2	30.2	29.6	30.5	31.0	29.8	30.8	30.2	31.2	31.6
8H	29.4	30.3	29.9	30.7	31.2	30.2	31.0	30.6	31.4	31.9
12H	29.6	30.4	30.1	30.9	31.3	30.4	31.3	30.9	31.7	32.1
8H 4H	28.9	29.8	29.4	30.2	30.7	29.3	30.2	29.8	30.6	31.1
6H	29.8	30.5	30.3	31.0	31.4	30.3	31.1	30.8	31.5	32.0
8H	30.1	30.8	30.6	31.2	31.7	30.8	31.4	31.3	31.9	32.4
12H	30.4	31.0	30.9	31.5	32.0	31.2	31.8	31.7	32.3	32.8
12H 4H	29.0	29.8	29.4	30.2	30.7	29.4	30.2	29.8	30.6	31.0
6H	29.9	30.6	30.4	31.0	31.5	30.4	31.1	30.9	31.5	32.0
8H	30.3	30.9	30.8	31.4	31.9	30.9	31.5	31.4	32.0	32.5
Variations with the observer position at spacings:										
S = 1.0H	+ 0.1 / - 0.2					+ 0.1 / - 0.2				
1.5H	+ 0.2 / - 0.3					+ 0.2 / - 0.3				
2.0H	+ 0.2 / - 0.4					+ 0.1 / - 0.4				

CIE Pub.117, 2173 lm Total Lamp Luminous Flux Correct (8log(F/F0) = 2.7)

C Range: 0 - 360DEG  
 C Interval: 15.0DEG  
 Test Speed: HIGH  
 Temperature:25.3DEG  
 Operators:  
 Test Date:2018-07-03

γ Range: 0 - 180DEG  
 γ Interval: 1.0DEG  
 Test System:EVERFINE GO-2000A\_V1 SYSTEM V2.0.362  
 Humidity:65.0%  
 Test Distance:12.586m [K=1.0000]  
 Remarks:

UTILIZATION FACTORS TABLE

NAME:	TYPE:FH19W-P0-G1 28HZ940 24V1603HML0L01
SPEC.:LWF-132400W160-HE	DIM.: 1 SERIAL No.:
MFR.: LEDWIDE LIGHTING CO., LTD	SUR.:0.01*1 Shielding Angle:

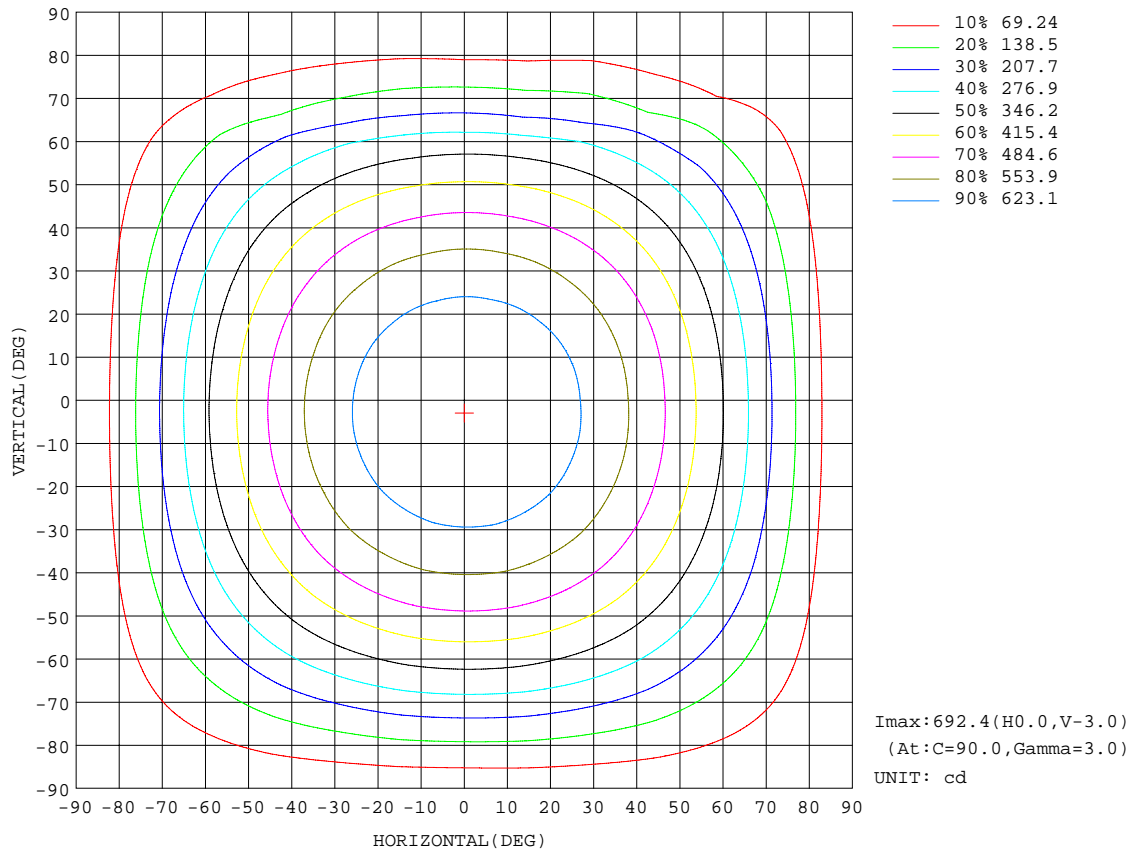
REFLECTANCE										
Ceiling	0.8	0.8	0.8	0.7	0.7	0.7	0.5	0.5	0.5	0
Walls	0.7	0.5	0.3	0.7	0.5	0.3	0.7	0.5	0.3	0
Working plane	0.2	0.2	0.2	0.2	0.2	0.2	0.2	0.2	0.2	0
ROOM INDEX	UTILIZATION FACTORS(PERCENT) $k(RI) \times RCR = 5$									
k = 0.60	56	44	37	55	44	37	54	43	36	30
0.80	66	54	46	65	53	46	63	52	46	38
1.00	74	63	55	73	62	55	70	63	54	47
1.25	81	70	63	80	70	63	77	68	62	54
1.50	86	76	69	85	75	68	81	73	67	59
2.00	93	85	78	91	83	77	88	81	75	67
2.50	97	89	83	95	88	82	91	85	80	71
3.00	101	94	88	99	92	87	94	89	84	75
4.00	105	99	94	103	97	93	98	94	90	80
5.00	108	103	98	105	100	97	100	96	93	83
ROOM INDEX	UF(total)									Direct
According to DIN EN 13032-2 2004			Suspended				SHRNOM = 1.25			

C Range: 0 - 360DEG  
 C Interval: 15.0DEG  
 Test Speed: HIGH  
 Temperature:25.3DEG  
 Operators:  
 Test Date:2018-07-03

$\gamma$  Range: 0 - 180DEG  
 $\gamma$  Interval: 1.0DEG  
 Test System:EVERFINE GO-2000A\_V1 SYSTEM V2.0.362  
 Humidity:65.0%  
 Test Distance:12.586m [K=1.0000]  
 Remarks:

**ISOCANDELA DIAGRAM**

NAME:	TYPE:FH19W-P0-G1 28HZ940 24V1603HML0L01	
SPEC.:LWF-132400W160-HE	DIM.: 1	SERIAL No.:
MFR.: LEDWIDE LIGHTING CO., LTD	SUR.:0.01*1	Shielding Angle:

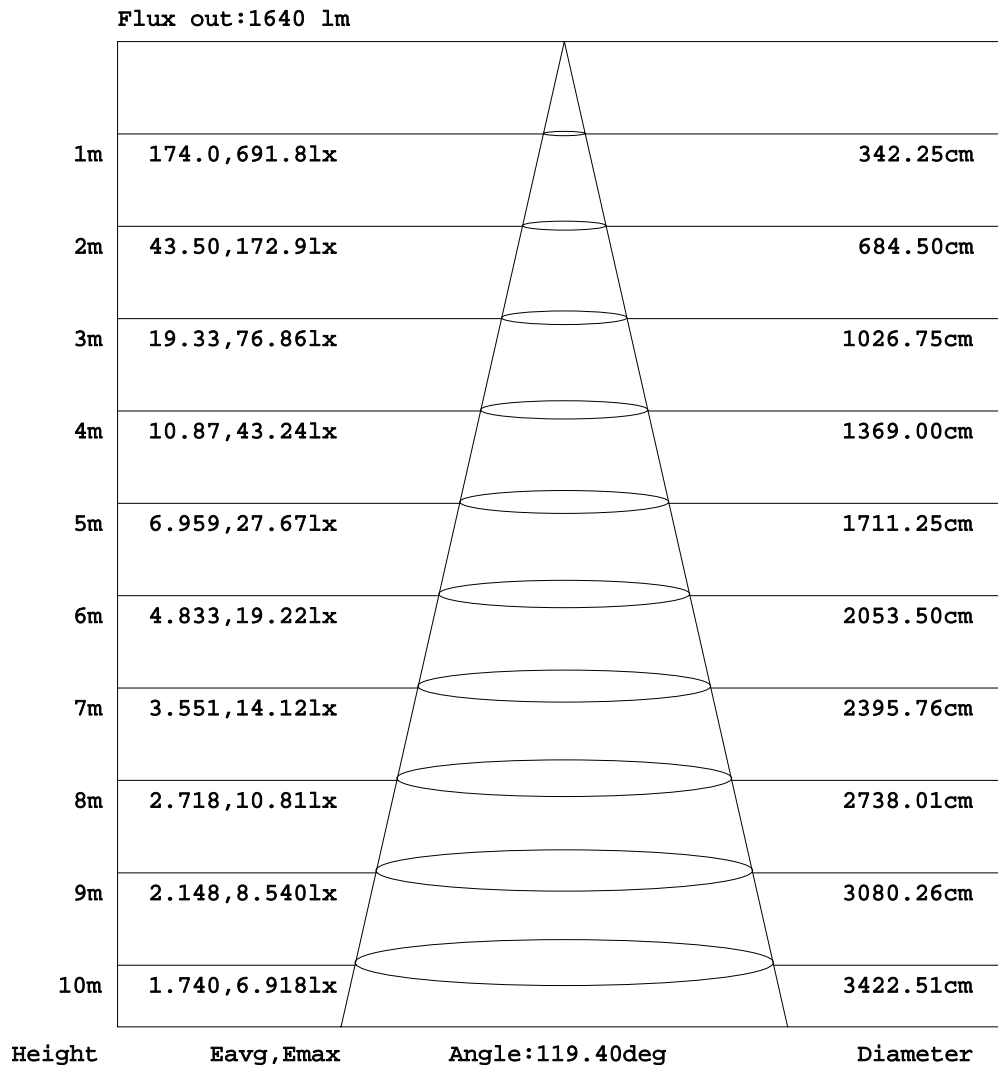


C Range: 0 - 360DEG  
 C Interval: 15.0DEG  
 Test Speed: HIGH  
 Temperature: 25.3DEG  
 Operators:  
 Test Date: 2018-07-03

γ Range: 0 - 180DEG  
 γ Interval: 1.0DEG  
 Test System: EVERFINE GO-2000A\_V1 SYSTEM V2.0.362  
 Humidity: 65.0%  
 Test Distance: 12.586m [K=1.0000]  
 Remarks:

AAI Figure

NAME:	TYPE:FH19W-P0-G1 28HZ940 24V1603HML01	MODEL:1010101
SPEC.:LWF-132400W160-HE	DIM.: 1	SERIAL No.:
MFR.: LEDWIDE LIGHTING CO., LTD	SUR.:0.01*1	Shielding Angle:



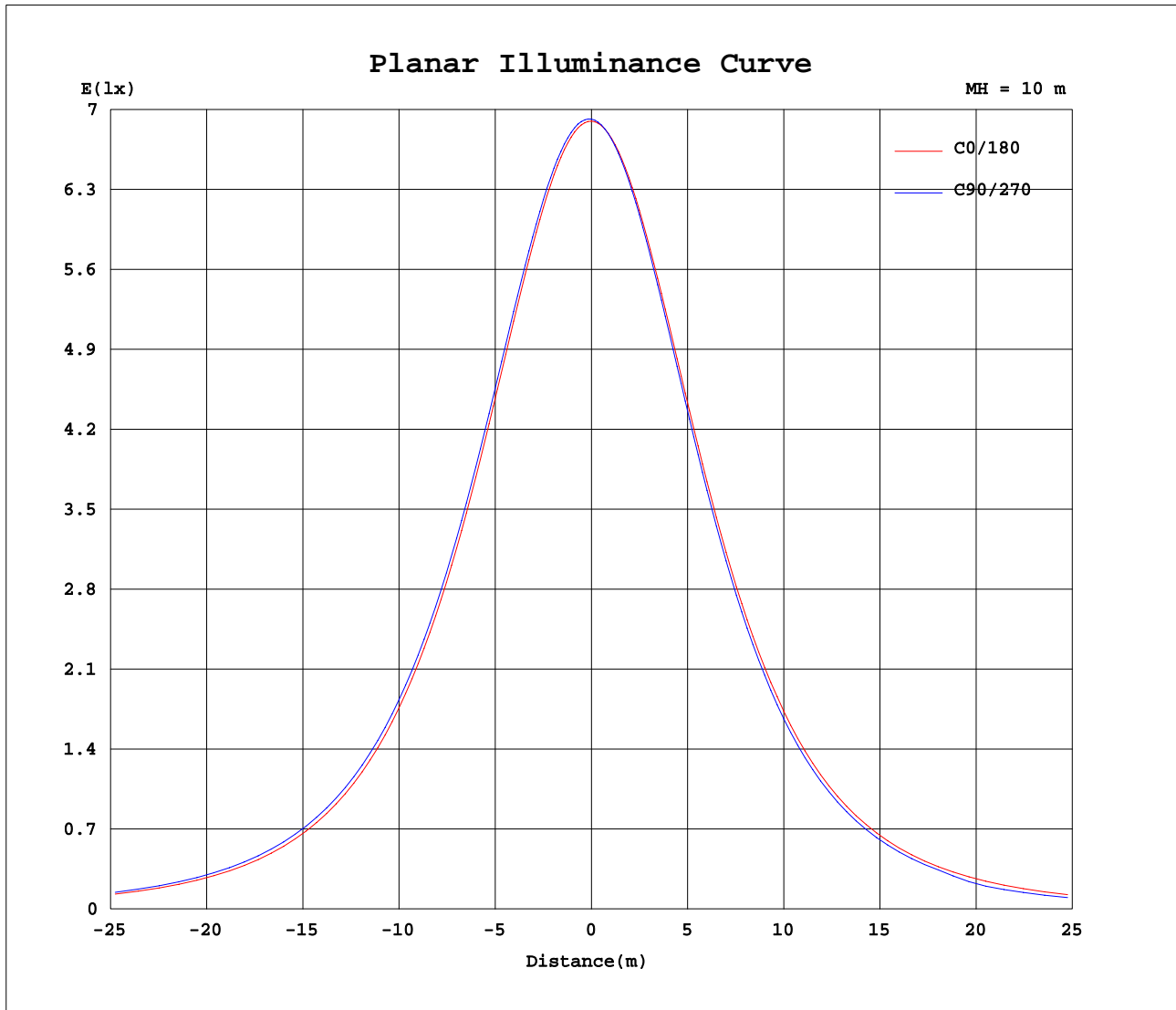
Note:The Curves indicate the illuminated area and the average illumination when the luminaire is at different distance.

C Range: 0 - 360DEG  
 C Interval: 15.0DEG  
 Test Speed: HIGH  
 Temperature:25.3DEG  
 Operators:  
 Test Date:2018-07-03

γ Range: 0 - 180DEG  
 γ Interval: 1.0DEG  
 Test System:EVERFINE GO-2000A\_V1 SYSTEM V2.0.362  
 Humidity:65.0%  
 Test Distance:12.586m [K=1.0000]  
 Remarks:



Planar Illuminance Curve



C Range: 0 - 360DEG  
 C Interval: 15.0DEG  
 Test Speed: HIGH  
 Temperature: 25.3DEG  
 Operators:  
 Test Date: 2018-07-03

$\gamma$  Range: 0 - 180DEG  
 $\gamma$  Interval: 1.0DEG  
 Test System: EVERFINE GO-2000A\_V1 SYSTEM V2.0.362  
 Humidity: 65.0%  
 Test Distance: 12.586m [K=1.0000]  
 Remarks:

LUMINOUS DISTRIBUTION INTENSITY DATA

NAME:	TYPE:FH19W-P0-G1 28HZ940 24V1603HML0L01
SPEC.:LWF-132400W160-HE	DIM.: 1 SERIAL No.:
MFR.: LEDWIDE LIGHTING CO., LTD	SUR.:0.01*1 Shielding Angle:

Table--1

UNIT: cd

C(DEG) γ (DEG)	0	15	30	45	60	75	90	105	120	135	150	165	180	195	210	225	240	255	270
0	690	690	691	691	691	691	692	691	691	691	691	691	690	690	691	691	691	691	692
5	688	689	690	691	691	692	692	691	691	690	689	688	687	687	687	686	686	686	687
10	681	683	685	686	687	687	687	687	686	684	683	681	679	678	678	677	677	676	677
15	670	673	675	677	677	678	678	677	675	674	671	669	667	665	664	662	662	661	662
20	654	657	659	662	663	664	663	663	660	658	655	652	649	647	645	643	643	642	642
25	632	637	639	642	643	645	644	643	640	638	634	631	627	624	622	619	618	617	618
30	606	611	615	618	619	621	620	619	616	613	608	604	600	596	594	590	589	588	589
35	575	581	585	589	590	592	591	590	586	583	577	573	568	563	560	556	555	553	554
40	539	546	550	555	556	558	557	556	551	548	541	537	531	526	523	518	516	514	515
45	498	506	510	516	517	520	518	517	512	508	501	495	490	483	479	474	472	470	471
50	452	459	465	471	473	475	474	472	468	462	455	449	443	436	431	426	423	422	422
55	402	410	416	422	425	427	426	424	419	413	405	398	392	385	379	374	371	368	369
60	347	355	362	368	372	374	373	371	365	359	351	343	336	329	323	317	314	311	312
65	287	297	304	311	314	317	316	314	307	301	293	284	277	269	263	256	245	231	226
70	224	235	242	250	252	256	254	253	246	240	231	223	215	206	200	180	170	169	169
75	161	171	178	186	190	193	191	190	183	178	169	161	153	144	136	110	115	115	111
80	101	110	117	124	127	130	129	127	121	117	109	102	93.4	85.4	70.5	65.9	65.4	65.2	61.3
85	49.0	56.8	62.4	68.6	71.0	73.5	71.7	70.8	66.2	62.9	55.9	50.6	42.3	37.3	30.9	30.2	29.5	27.1	24.1
90	12.7	19.9	22.8	27.8	28.9	30.6	29.6	29.3	27.0	24.1	19.2	15.2	6.66	9.78	9.96	8.95	8.63	7.43	5.90
95	2.27	2.73	3.44	5.00	4.58	8.35	8.65	8.47	6.37	4.29	2.47	2.23	1.82	2.29	2.81	2.90	2.73	2.60	2.34
100	2.97	2.89	3.14	3.06	2.96	3.37	3.57	3.08	2.56	2.55	2.61	3.02	2.47	2.48	2.68	2.97	2.74	2.67	2.74
105	3.85	3.90	3.64	3.39	3.29	3.28	3.14	3.21	3.30	3.44	3.69	3.94	3.16	3.18	3.34	3.38	3.39	3.29	3.36
110	4.70	4.72	4.66	4.52	4.34	4.29	4.18	4.16	4.30	4.58	4.62	4.80	3.89	3.89	4.03	3.98	4.08	3.97	4.03
115	5.49	5.49	5.53	5.59	5.43	5.50	5.30	5.23	5.36	5.52	5.43	5.58	4.60	4.84	4.69	4.63	4.71	4.62	4.71
120	6.22	6.21	6.19	6.42	6.41	6.72	6.54	6.42	6.22	6.22	6.13	6.34	5.27	5.58	5.34	5.26	5.31	5.24	5.30
125	6.91	6.84	6.72	7.02	7.22	7.50	7.53	7.43	6.99	6.82	6.71	7.14	5.84	6.13	6.20	5.86	5.91	5.79	5.87
130	7.41	7.40	7.24	7.45	7.76	8.31	8.49	8.13	7.51	7.18	7.10	7.74	6.48	6.59	6.95	6.42	6.51	6.35	6.42
135	7.68	7.75	7.61	7.77	8.13	8.80	9.22	8.78	8.00	7.62	7.48	7.97	7.11	7.09	7.51	7.06	7.06	6.94	6.97
140	7.88	8.04	7.91	8.18	8.51	9.13	9.63	9.21	8.36	8.10	8.05	8.12	7.73	7.64	7.93	7.92	7.63	7.50	7.48
145	8.02	8.23	8.20	8.59	8.97	9.34	9.78	9.50	8.83	8.40	8.42	8.20	8.34	8.21	8.31	8.52	8.30	8.13	8.00
150	8.16	8.49	8.54	8.95	9.24	9.57	9.65	9.82	9.30	8.75	8.63	8.23	8.92	8.70	8.74	8.92	9.26	8.78	8.59
155	8.41	8.72	8.86	9.18	9.36	9.54	9.63	9.93	9.45	8.99	8.66	8.26	9.43	9.16	9.15	9.26	9.73	9.49	9.27
160	8.68	9.05	9.16	9.49	9.53	9.56	9.68	9.99	9.46	9.29	8.65	8.42	9.88	9.57	9.61	9.65	9.84	10.2	10.0
165	9.02	9.29	9.40	9.64	9.63	9.65	9.77	9.86	9.45	9.36	8.71	8.72	10.2	9.89	10.0	10.1	10.3	10.4	10.7
170	9.33	9.60	9.68	9.90	9.88	9.87	10.1	9.98	9.86	9.49	8.96	9.04	10.5	10.2	10.4	10.4	10.6	10.8	11.1
175	10.0	10.2	10.2	10.3	10.4	10.4	10.7	10.6	10.5	10.0	9.75	9.95	10.5	10.4	10.6	10.6	10.9	10.9	11.4
180	10.5	10.5	10.6	10.7	10.9	10.9	11.4	11.5	11.0	10.8	10.5	10.5	10.6	10.5	10.6	10.7	10.9	11.0	11.4

C Range: 0 - 360DEG  
 C Interval: 15.0DEG  
 Test Speed: HIGH  
 Temperature:25.3DEG  
 Operators:  
 Test Date:2018-07-03

γ Range: 0 - 180DEG  
 γ Interval: 1.0DEG  
 Test System:EVERFINE GO-2000A\_V1 SYSTEM V2.0.362  
 Humidity:65.0%  
 Test Distance:12.586m [K=1.0000]  
 Remarks:

LUMINOUS DISTRIBUTION INTENSITY DATA

NAME:	TYPE:FH19W-P0-G1 28HZ940 24V1603HML0L01
SPEC.:LWF-132400W160-HE	DIM.: 1 SERIAL No.:
MFR.: LEDWIDE LIGHTING CO., LTD	SUR.:0.01*1 Shielding Angle:

Table--2

UNIT: cd

C(DEG) γ (DEG)	285	300	315	330	345														
0	691	691	691	691	691														
5	686	687	687	688	689														
10	677	678	679	680	681														
15	662	664	665	667	669														
20	643	645	647	650	652														
25	618	621	623	627	630														
30	589	592	595	600	604														
35	555	559	562	567	572														
40	516	520	524	530	535														
45	472	476	481	487	494														
50	424	428	434	440	447														
55	371	376	381	389	396														
60	314	319	325	333	340														
65	224	251	264	273	281														
70	165	177	185	210	217														
75	110	124	116	143	154														
80	60.9	71.2	65.9	68.6	94.4														
85	25.7	32.2	30.4	32.2	44.2														
90	6.93	9.43	10.4	9.88	16.0														
95	2.42	3.11	4.64	3.08	2.61														
100	2.64	2.71	3.56	4.31	3.18														
105	3.26	3.33	3.49	3.65	3.00														
110	3.94	4.00	3.87	3.92	3.70														
115	4.59	4.64	4.53	4.74	4.39														
120	5.19	5.24	5.15	5.23	5.06														
125	5.77	5.82	5.74	5.82	5.71														
130	6.30	6.37	6.33	6.43	6.33														
135	6.84	6.91	6.89	7.04	6.96														
140	7.42	7.48	7.42	7.66	7.58														
145	8.01	8.05	7.98	8.23	8.14														
150	8.60	8.64	8.58	8.82	8.67														
155	9.17	9.18	9.19	9.30	9.17														
160	9.73	9.73	9.81	9.78	9.62														
165	10.3	10.2	10.2	10.2	10.1														
170	10.8	10.7	10.5	10.4	10.4														
175	11.0	10.9	10.6	10.6	10.5														
180	11.5	11.0	10.7	10.6	10.6														

C Range: 0 - 360DEG  
 C Interval: 15.0DEG  
 Test Speed: HIGH  
 Temperature:25.3DEG  
 Operators:  
 Test Date:2018-07-03

γ Range: 0 - 180DEG  
 γ Interval: 1.0DEG  
 Test System:EVERFINE GO-2000A\_V1 SYSTEM V2.0.362  
 Humidity:65.0%  
 Test Distance:12.586m [K=1.0000]  
 Remarks: